

GPAW Brass Inset Door Pivot Hinge

Material

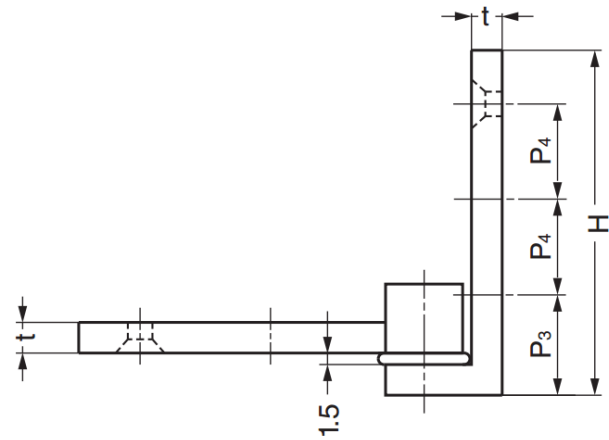
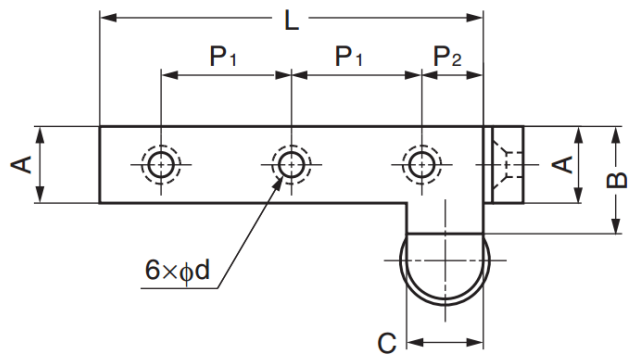
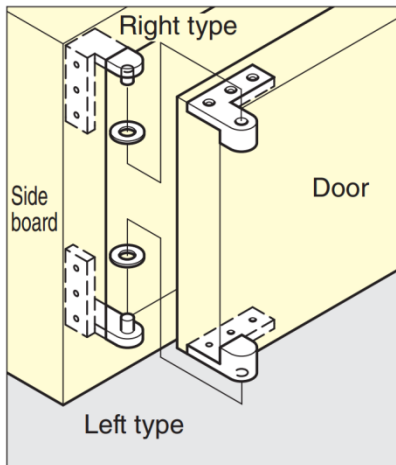
- Brass, satin nickel finish

Notes

- Sold in pairs

Parts Included

- **GPAW-50, 60:** Countersunk head wood screw 3.1×20 (SUS)
- **GPAW-80, 95:** Countersunk head wood screw 3.8×25 (SUS)



Right type shown

Part No.	L	t	H	A	B	C	P ₁	P ₂	P ₃	P ₄	d	Door Width	Door Height	Door Thickness	Door Weight
GPAW-50	50	4	45	10	14	10	17	8	13	12.5	3.2	Max. 450	Max. 700	14	Max. 2.6 kg / pair
GPAW-60	60	4.5	50	12	16	12	21	9	12.5	15.5				16	
GPAW-80	80	6	70	16	20	15	30	10	15	23	4.2			20	Max. 4 kg / pair
GPAW-95	95	6.5	80	19	28	16	35	12.5	18	25.5				28	